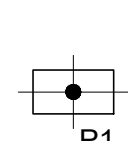
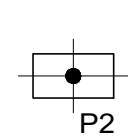
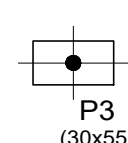
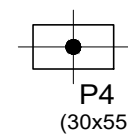
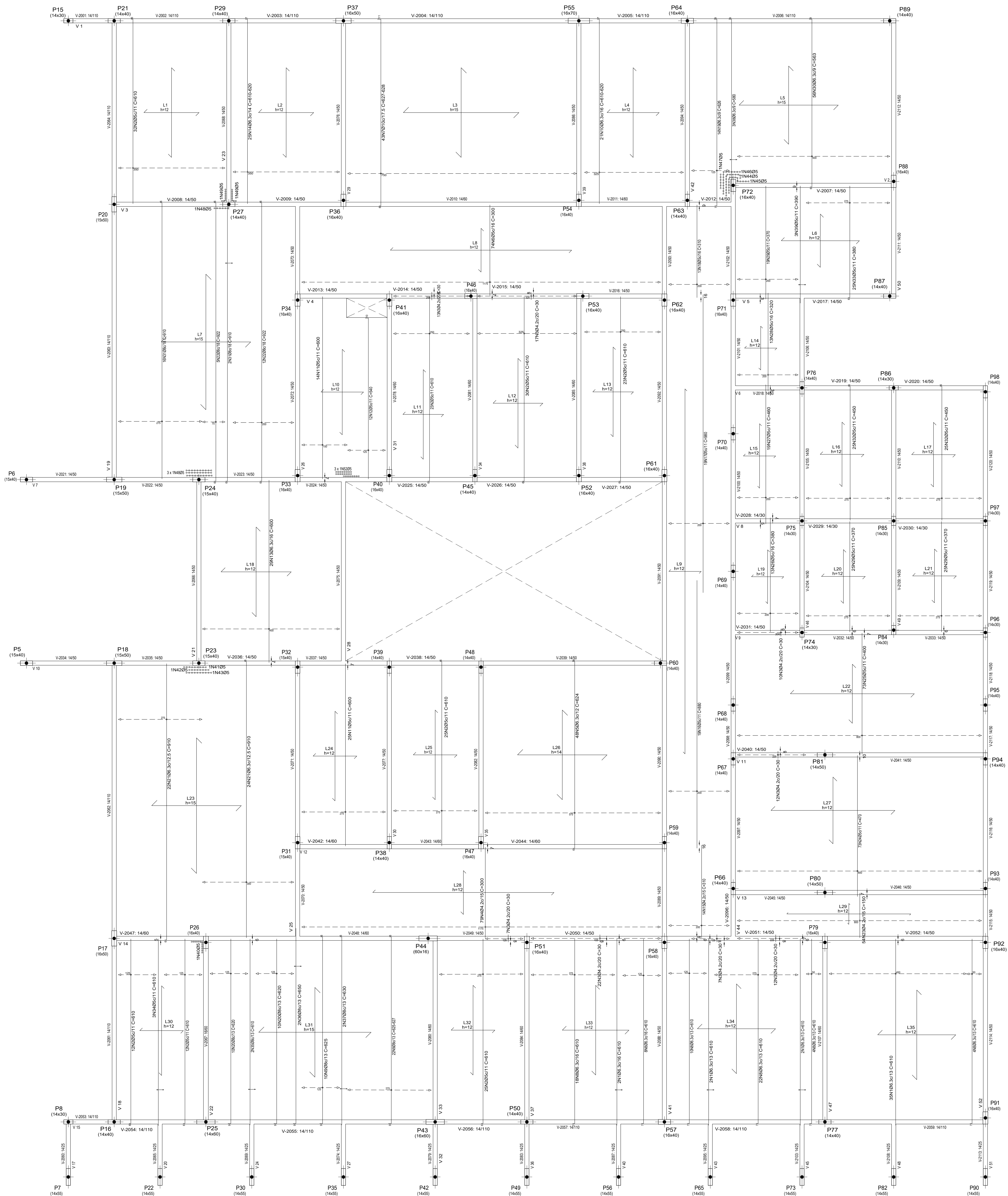
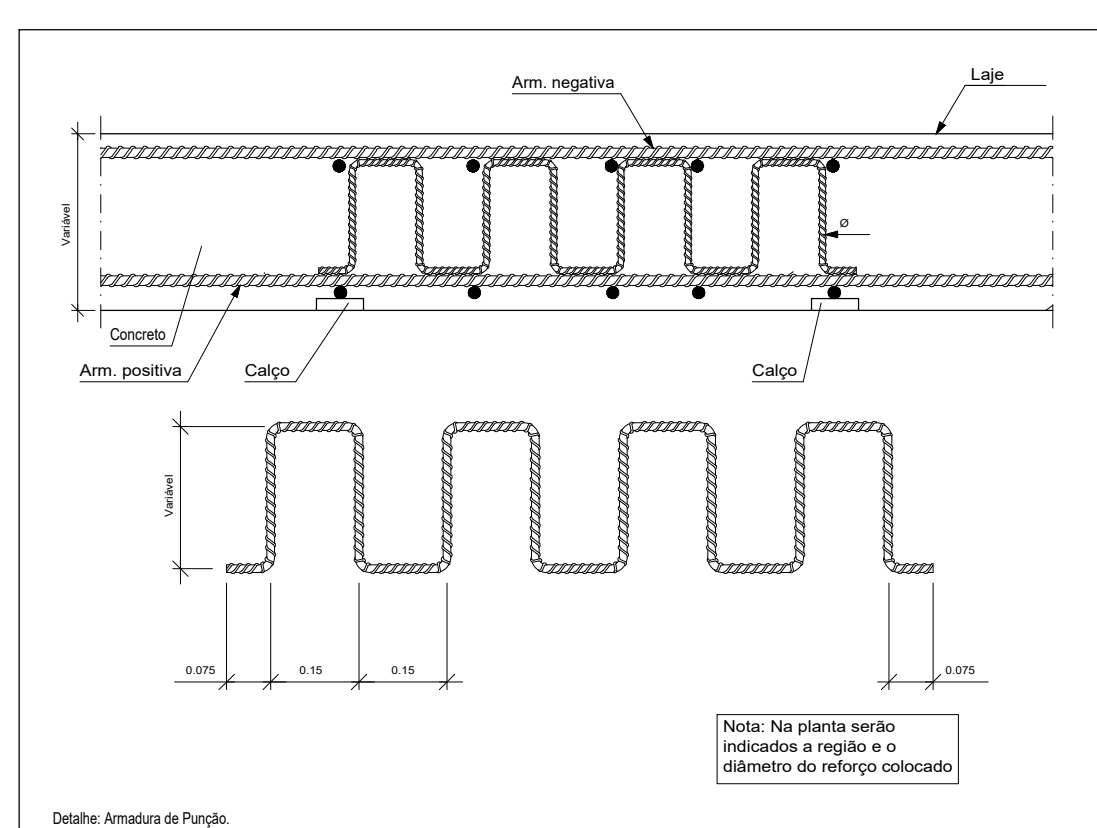


Resumo Aço			
Laje de Cobertura			
Armadura transversal inferior	Comp. total (m)	Peso (kg)	Total
CA-50	Ø6.3	2246.6	550
	Ø8	662.3	269
	Ø10	269.6	166
CA-60	Ø4.2	391.4	43
	Ø5	3478.9	589
Total			1574



Laje de Cobertura
Armadura transversal inferior
Concreto: C25, em geral
C40 (V-C40)
Escala: 1:50



Elemento	Pos.	Diam.	Q.	Dob. (cm)	Ret. (cm)	Dob. (cm)	Comp. (cm)	Total (cm)	CA-50 (kg)	CA-60 (kg)
Armadura transversal inferior	1	Ø6.3	41	6	610		610	25010	61.3	
	2	Ø5	162	6	604		610	11020		174.3
	3	Ø4.2	100	30	300		300	3000		3
	4	Ø4.2	79	300	300		300	23700		25.8
	5	Ø6.3	48	6	610	8	624	29952	73.4	
	6	Ø5	74	300	300		300	22200		34.9
	7	Ø10	43	6	610	11	627	26961	166.1	
	8	Ø6.3	66	7	603		610	40260	98.6	
	9	Ø8	32	9	610	6	625	20000	79.0	
	10	Ø6.3	21	7	VAR.		VAR.	12831	31.4	
	11	Ø5	39	600	600		600	23400		36.7
	12	Ø5	12	10	530		540	6480		10.2
	13	Ø6.3	29	600	600		600	17400	42.6	
	14	Ø6.3	25	7	VAR.		VAR.	15275	37.4	
	15	Ø4.2	14	310			310	4340		4.7
	16	Ø5	19	880			880	16720		26.3
	17	Ø5	19	980			980	18620		29.2
	18	Ø5	13	310			310	4030		6.3
	19	Ø6.3	14	7	610	9	626	8764	21.5	
	20	Ø8	20	9	611	620	12400	49.0		
	21	Ø6.3	46	6	904		910	41860	102.5	
	22	Ø8	17	6	910	6	922	15674	61.9	
	23	Ø4.2	54	150			150	8100		8.8
	24	Ø5	73	470			470	34310		53.9
	25	Ø5	73	400			400	29200		45.8
	26	Ø5	13	380			380	4940		7.8
	27	Ø5	19	460			460	8740		13.7
	28	Ø5	13	320			320	4160		6.5
	29	Ø5	69	370			370	25530		40.1
	30	Ø6.3	56	6	548	9	563	31528	77.2	
	31	Ø8	18	6	904		910	16380	64.7	
	32	Ø5	50	6	444		450	22500		35.3
33	Ø5	25	6	374		380	9500		14.9	
34	Ø5	3	610			610	1830		2.9	
35	Ø8	2	610			610	1220	4.8		
36	Ø8	2	9	641		650	1300	5.1		
37	Ø8	2	6	624		630	1260	5.0		
38	Ø6.3	3	9	571		580	1740	4.3		
39	Ø5	3	390			390	1170		1.8	
40	Ø5	1	15	168	15	198	198	0.3		
41	Ø5	1	15	180	15	210	210	0.3		
42	Ø5	1	15	159	15	189	378	0.6		
43	Ø5	2	15	201	15	231	462	0.7		
44	Ø5	1	15	218	15	248	248	0.4		
45	Ø5	2	15	96	15	126	252	0.4		
46	Ø5	1	15	301	15	331	331	0.5		
47	Ø5	1	15	306	15	336	336	0.5		
48	Ø5	2	15	117	15	147	294	0.5		
49	Ø5	2	15	119	15	149	298	0.5		
50	Ø6.3	1	15	12	15	42	42	0.1		
51	Ø5	1	15	54	15	84	84	0.1		
52	Ø5	3	15	121	15	151	453	0.7		
Total:									985.9	588.7
Ø4.2:									0.0	42.6
Ø5:									0.0	546.1
Ø6.3:									550.3	0.0
Ø8:									269.5	0.0
Ø10:									166.1	0.0
Total:									985.9	588.7

LAJES

ARCOVERDE - PE

ENDEREÇO: RUA EDILIO SIMÕES DA ROCHA, 93-95 - SÃO MIGUEL
 PROPRIETÁRIO: SEÇÃO JUDICIÁRIA DE PERNAMBUCO
 Autor do Projeto: Eng.º Celso Gesteira Branco - CREA nº 1.788-DPE
 Resp. Técnico:

Proprietário:
 Autor do Projeto: CREA nº 1.788-DPE
 A.T. CREA-PE

CREA

LAJES DA COBERTURA		
PRIMAria	EDIFÍCIO DE USO PÚBLICO - JUSTIÇA FEDERAL	TIPO
02/16	ARMADURAS TRANSVERSAIS INFERIORES - POSITIVAS	ESTR.
Rev. 04/2022	Desenho: Luan	Escala: 1/50